



RJS CORPORATION

AKRON, OHIO USA

SELF-ENERGIZED

NOSE GUIDE ASSEMBLY

THE ALIGNING SYSTEM TO GUIDE A CONVEYOR BELT OVER A NOSE BAR

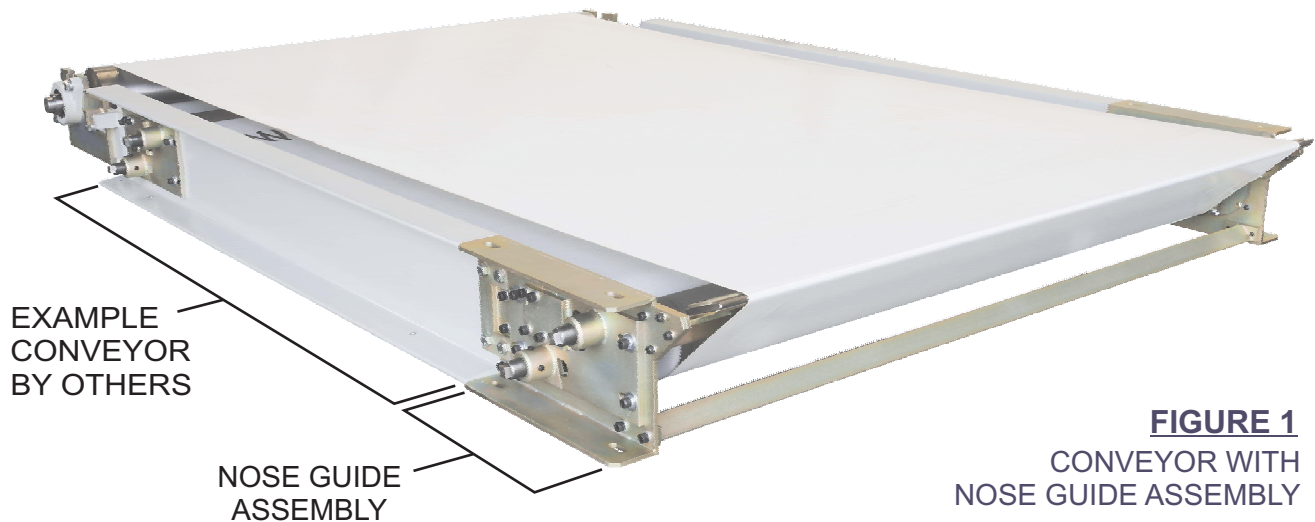


FIGURE 1
CONVEYOR WITH
NOSE GUIDE ASSEMBLY

The **RJS Nose Guide Assembly** combines a conveyor nose bar with the RJS Disciplin Belt Guide to provide in one package a self-energized belt-guiding nose bar.

Supplied assembled to any belt width ranging from 12 inches (305 mm) to 52 inches (1321 mm) as selected by the end-user, **Nose Guide Assembly** provides a convenient means for the conveyor designer to incorporate a nose bar into his conveyor system either as a retrofit or in a new design and thereby minimize the problem of off-tracking of the belt.

Nose Guide Assembly for belt widths exceeding 52 inches (1321 mm) will be considered on a case by case basis.

Intended for operation with thin belts, the **Nose Guide Assembly** is provided with a size 3 Disciplin Guide especially designed for good response to such belts. The belt may travel in either direction.

For a description of the Disciplin Belt Guide as applied to standard conveyor applications, refer to Bulletin DG-797.

Sold by:

BULLETIN NO.
NGA-1209

NOSE GUIDE ASSEMBLY DESCRIPTION

The **Nose Guide Assembly** as supplied is shown in Figure 1, where it is seen as a component of a conveyor provided by others. Included are connection plates and connection angles to assist in connecting to the user-supplied conveyor.

Configured as an assembled unit, ready for incorporation into a system designed by the end-user, the complete **Nose Guide Assembly** is seen in Figure 2 and consists of the following major parts:

1. A complete "Size 3" Disciplign Belt Guide, Model FT.
2. Demountable roller mounting plates
3. A steel nose bar.
4. Frame (end channels, roller mounting plates, connection plates and connection angles, nose bar support, cross braces)

It is necessary in a conveyor system to provide belt alignment throughout the system. The **Nose Guide Assembly** cannot be expected to be the only aligning device; its main function is to keep the belt aligned at the nose bar. Accordingly, it is recommended that the end-user provide appropriately applied Disciplign Belt Guide elsewhere in the system.

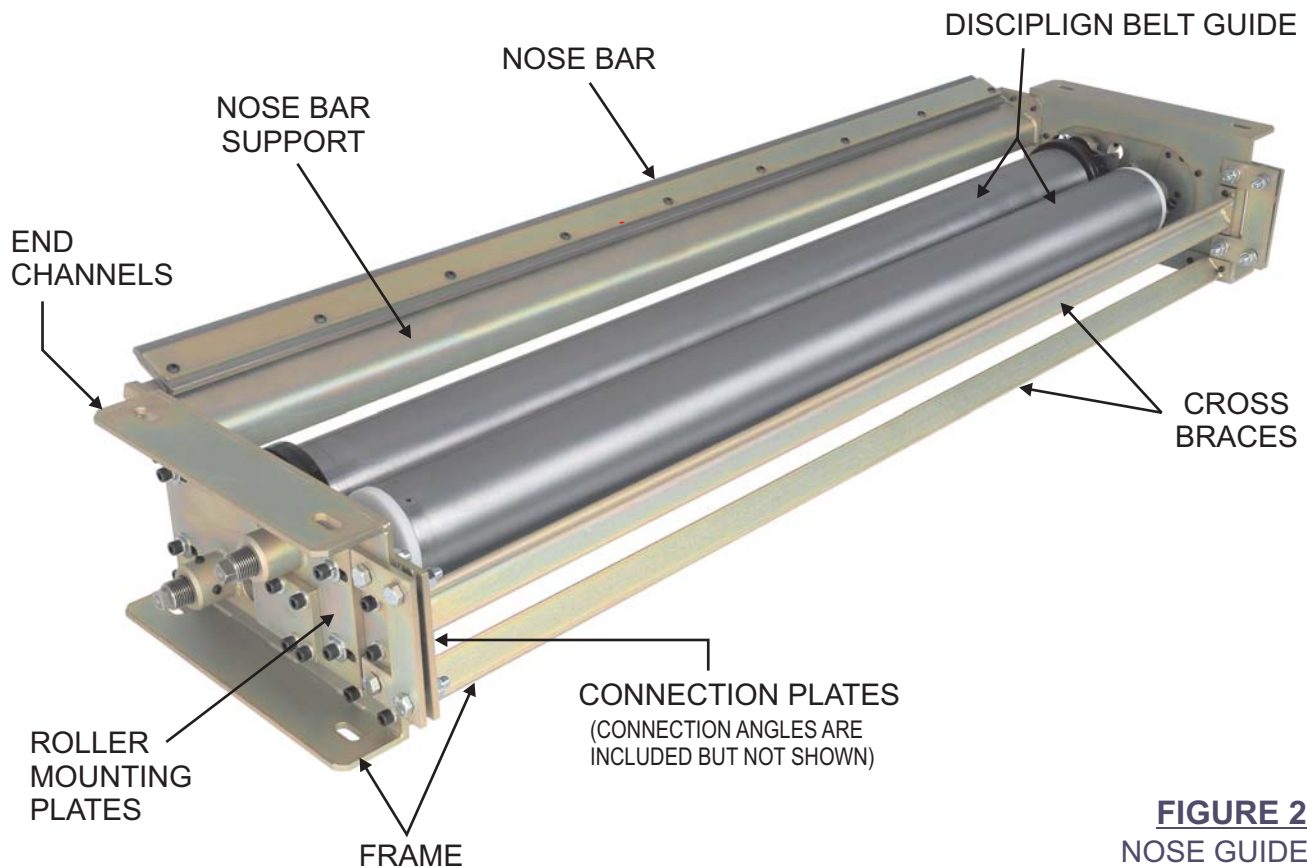


FIGURE 2
NOSE GUIDE
ASSEMBLY

BELT TYPE

The belt is provided by the end-user, and must be suitable for use with a nose bar. Recommendations of the belt supplier should be followed.

Additionally, the belt should be dimensionally precise in width, laterally stable, squarely spliced, and of the order of .030 in. (0.76 mm) thickness for good response of the Disciplign mechanism.

The **Nose Guide Assembly** is supplied with a steel nose bar of 3/16 in. (4.75 mm) radius, [3/8 in. (9.5 mm) thickness]. The belt supplier should confirm that the belt is suitable for a nose bar of that radius. Optional nose bars of 1/8 in. (3.2 mm) radius, [1/4 in. (6.4mm) thickness] and 1/4 in. (6.4 mm) radius, [1/2 in. (12.7 mm) thickness] are available.

With reference to Bulletin DG-797, the **Nose Guide Assembly** is normally supplied with a “K” dimension of 1/8 in. (3.2 mm) more than the width of the belt to be used. The belt width must not exceed the K dimension.

Some belts passing over a nose bar will generate a noise caused by the weave of the belt. This may be a consideration when selecting a belt.

BELT INSTALLATION OR REPLACEMENT

Conveyor belts for nose bar service are generally required to be “endless”, that is, such belts are supplied and spliced by the belt supplier employing a cemented splice with a minimum of discontinuity of the belt thickness and flexibility. The belt characteristics outlined in the foregoing description of **BELT TYPE** should be followed.

Endless belts, of course, are more difficult to install into a conveyor system compared to a laced belt. Accordingly, **Nose Guide Assembly** has been designed to minimize the effort required to install or replace a belt. To install or replace an endless belt on the Nose guide generally requires only the removal of the nose bar and one roller of the two comprising the Disciplign Belt Guide. To facilitate the roll removal, the roller mounting plates retaining the Disciplign Belt Guide are supplied in two pieces so that the mating roller of the Disciplign Belt Guide may be kept in place.

ORDERING INFORMATION *Order from RJS representative or directly from factory*

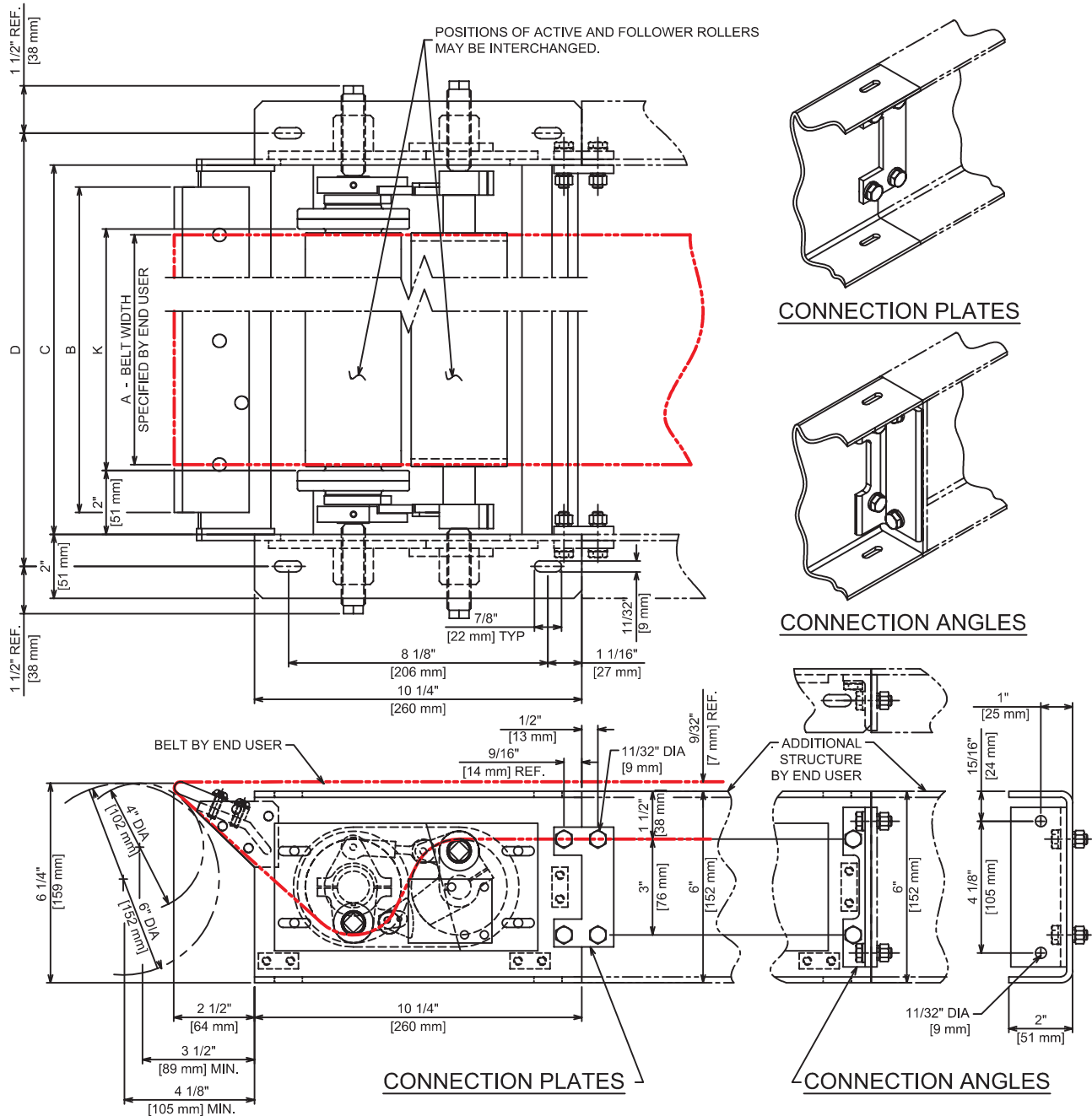
To order a **Nose Guide Assembly**, please supply the following information:

1. Size of **Nose Guide Assembly** desired. State belt width [12 in. (305mm) to 52 in. (1321mm)]
2. Approximate speed of the belt.
3. Radius (and thickness) of nose bar required.
4. The user should assess his conveyor design and determine the possible need for guiding the belt elsewhere in the system. The **Nose Guide Assembly** is intended to guide the belt over the nose bar, and cannot be expected to provide guiding throughout the system. It is recommended that the user supplement his guiding requirements by applying additional Disciplign Belt Guides if needed. (Refer to Bulletin DG-797)

RJS CORPORATION
3400 MASSILLON ROAD
AKRON, OHIO 44312 USA

Telephone: 330-896-2387
Fax: 330-896-3282
Email: sales@rjscorp.com

DIMENSIONAL INFORMATION



A = BELT WIDTH & ROLLER LENGTH (SPECIFIED BY END USER)
 SELECT FROM 12" (305 mm) TO 52" (1321 mm)

B = NOSE BAR LENGTH, BELT WIDTH "A" + 2-3/4" (69.9 mm)

C = FRAME BACK TO BACK, BELT WIDTH "A" + 4-1/8" (105 mm)

D = SPAN, SLOT TO SLOT, "C" + 2" (51 mm)

K = SPAN, DRIVE DRUM TO DRIVE DRUM, BELT WIDTH "A" + 1/8" (3 mm)

NOSE GUIDE ASSEMBLY

(DIMENSIONS SUBJECT TO CHANGE WITHOUT NOTICE)

PROJECTION

