

TRANSFER PIVOT STOP (OPTIONAL)

OVERHEAD SUPPORT STRUCTURE (OPTIONAL)

RUNWAY (OPTIONAL)

LATERAL TRAVERSE BEAM

OVERHEAD CARRIAGE

AIR FESTOON

TROLLEY

COLUMN (OPTIONAL)

KN AIR BALANCE LOADER (PNEUMATIC HOIST)
Max. working ranges:
73" (1854 mm)
or
110" (2794 mm)

ACTUATING PENDANT (AIR CONTROL PENDANT)

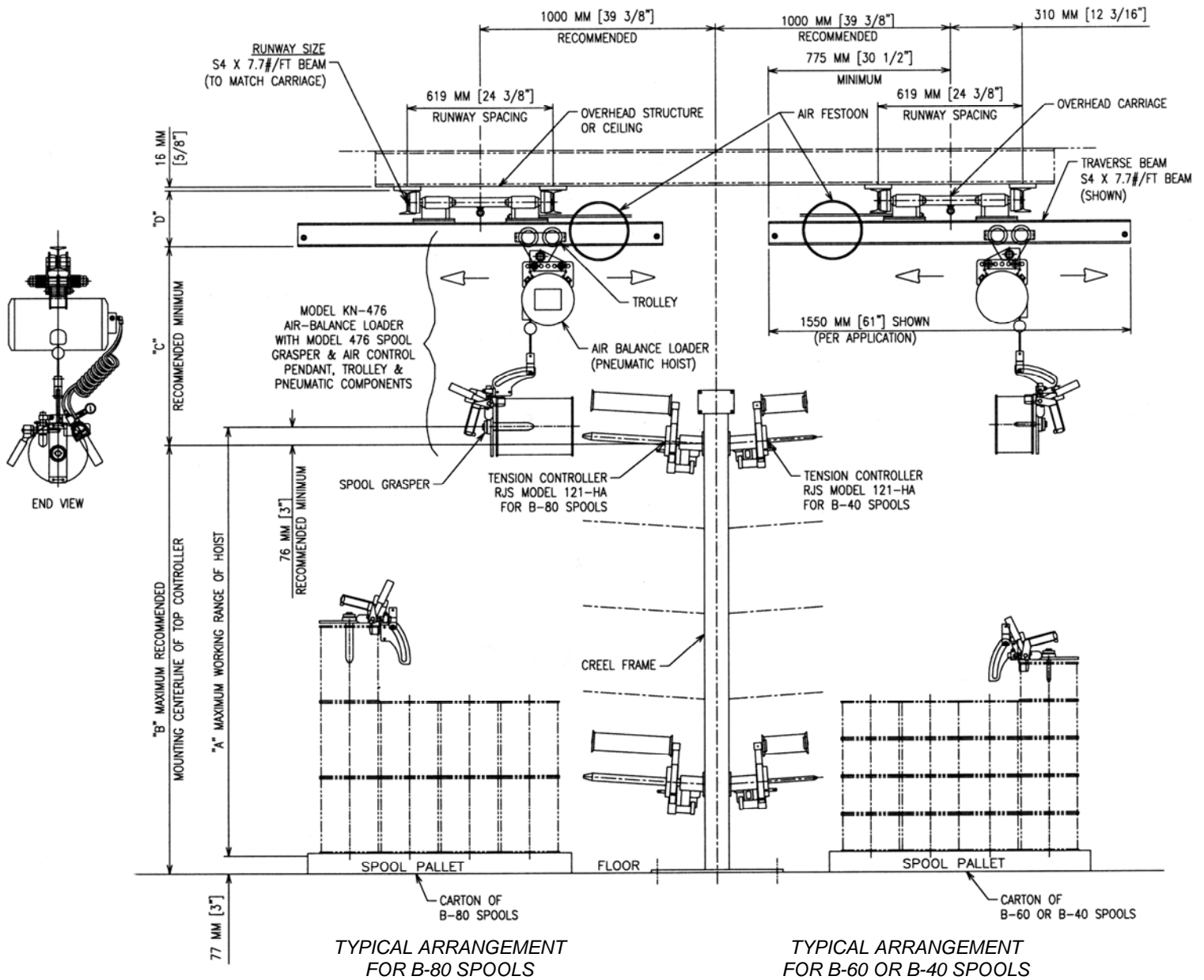
SPOOL GRASPER (SPOOL HANDLER)

A complete system is shown.
Only items ordered shall be supplied.

RJS CORPORATION
3400 MASSILLON ROAD
AKRON, OHIO 44312 USA

RJS MODEL KN 476/477 CREEL LOADER

RJS-KN476-477-10



RJS MODEL KN 476/477 CREEL LOADER

MODEL	"A" MAX WORKING RANGE		"B" MAX HEIGHT		"C"		"D"	
KN	1854 mm	73"	1854 mm	73"	855 mm	33-11/16"	* 240 mm	* 9-7/16"
KN-1	2794 mm	110"	2794 mm	110"	906 mm	35-11/16"		

* USING S4 x 7.7 #/FT BEAM FOR RUNWAYS AND TRAVERSE BEAM

MAJOR COMPONENTS SHOWN:

- Spool Grasper (Specify spool type)
- Pneumatic Hoist (Air Balance Loader) (Specify Model)
- Trolley
- Overhead Carriage with Traverse Beam
- Air Festoon
- Overhead Support Steel & Runways

Specifications subject to change without notice.



CORPORATION
3400 MASSILLON ROAD
AKRON, OHIO 44312 USA

TEL: +1 330-896-2387
FAX: +1 330-896-3282
sales@rjscorp.com
www.rjscorp.com